

UPDATE

2025

WHAT DOES **UNLOCK** HAVE TO OFFER TODAY?

Dawn Lonsdale Chief Officer

UNLOCKING REAL LIFE STORIES OF URBAN PEOPLE

Start with the group telling stories from their real life experience.

LEADING TO MORE EXPERIENCE

What we learn now is learnt for life and changes us. We also learn to keep reflecting!

In a small organisation like Unlock, that has been around for a good long time, we need to stop once in a while and make sure we still know what we're doing and why. We particularly need to do this in a world that is changing as fast as ours has in recent years.

Having done this we find that we still fully believe in the value of these core elements of what we do:

REVEALING GOOD NEWS OF THE DOWN TO EARTH CHRIST

The real life stories are connected to and compared with similar situations in the Bible.

- our Unlock learning cycle.
- starting with people's own stories.
- listening first and most.
- learners set the agenda.
- connecting people's own stories with stories in the Bible.
- local people learning together in small groups.
- creative activities.

Unlock's aim is just to get these tools into local people's hands and enable more people to become confident in using them.

RELEASING LIFE-CHANGING SKILLS AND CONFIDENCE

Change happens as a result of linking real life experience with the Bible. This change often leads to action among others.

Three ways in which you can access what Unlock has to offer.

1. **NEW! Unlock Local Launch** unlock-urban.org.uk/our-workers/all and on page 2
2. **Unlock Training** unlock-urban.org.uk/resources/trainers
3. **Unlock Resources** unlock-urban.org.uk/resources/resources

SEE OUR WEBSITE FOR MORE INFORMATION AT UNLOCK-URBAN.ORG.UK

TRANSFORMATION THROUGH THE POWER OF STORIES

NEW! UNLOCK LOCAL LAUNCH



We are calling this kind of work an '**Unlock Local Launch**'; the purpose being to set something on its way that will then travel onwards without us.

Where I grew up in the North East I used to watch the local Pilot boat guiding big cargo ships in and out of the port at high tide. The Pilot (in his Pilot Boat - in those days it would always have been a him!) knows the local sandbanks, channels and tides and is able to guide the bigger vessels through them by a safe route. So the Unlock local workers are 'Unlock Local Pilots'; whose role is to guide the '**Unlock Local Launch**' safely to the point where it can voyage onwards on its own.

Dawn Lonsdale Chief Officer

For an Unlock Local Launch Unlock's National Office provides:

- Training, support resources and consultancy for two years including.
- 1 day Unlock training on site (which you can open up to the wider area).
- Unlock staff make 2 further site visits to your Unlock Local Pilot(s) over 24 months.
- Free attendance for 2 Unlock Local Pilots at 2 Unlock National Gatherings.
- Unlimited remote support, guidance, review, training and consultation.
- Unlimited access to Unlock worker resources and training/guidance on the Unlock website.
- Funded attendance at The Unlock London walk for 1-2 Unlock local pilot(s) in their first year (as part of their training).

Total cost is £1800 over two years, (most of which is paid monthly – ie. around £60 per month).



Expected Outcomes:

- Growing the congregation's confidence and skills in faith sharing.
- Growing the congregation and discipleship.
- Strengthening connections in both church and community.
- Nurturing self-esteem and personal growth.
- Nurturing indigenous leadership.
- Improved church/community links.

WANTED! NEW UNLOCK NATIONAL COUNCIL MEMBERS

We need a few new volunteer Council members to oversee and help shape our work as it develops. Council meets on three Saturdays a year, often in Rotherham, (including one 24 hour residential event, usually at Cliff College, Derbyshire). Travel expenses provided.

We need council members who:

- Have a concern for, and an understanding of, the specific nature of Christian ministry and mission in urban areas in the UK.
- Are willing to engage with open and creative discussions and approaches.
- Are willing to reflect and learn as they work together.
- Have some understanding of the way that small charities work.

For more information about the Unlock National Council Unlock please contact The Unlock National Office.

- 1 Sit in a circle.
- 2 The person with the bag takes one object out of it.
- 3 They briefly tell of something from their own experience, but they are reminded of by the object they have pulled out of the bag.
- 4 They try to think of a Bible passage that connects to the story they have told.
- 5 If they can't think of anything the rest of the group can help with suggestions.
- 6 Discuss whether the Bible story throws any light on the story told by the person with the bag.
- 7 The bag is passed to the next person and steps 1-7 are repeated.



The bag contains a completely random selection of household and/or natural objects; safe ones, obviously!

Developed from an idea by Sonia Doragh for Unlock Liverpool.

EVERYWHERE AND NOWHERE?

Both are true in terms of where Unlock works!

Unlock's approach (see page 2) can be used anywhere; and it is. Because we give our resources away for free we have no idea who is using them, or where or how. But we routinely meet people who tell us that they are not only using our resources and approaches, but have been doing so for years or even decades. If you are one of those people we'd love to hear your story!

However, we are a very small organisation with limited resources, so we need to target our work to the places where it will make the greatest difference. Unlock was founded in 1972 in response to a concern that the mainstream churches were largely failing to connect with and for the 'urban poor'. These days we are squeamish about such terms, and probably rightly, but the reality is that Unlock's approaches have been specifically developed to nurture connections in communities which are most marginalised by the way the world is today.

So, to maximise our impact we seek to do our most focussed work in the places that have felt left out and left behind. Sociologists and policy makers crunch numbers and come up with indices of deprivation, stats about educational attainment, health and life expectancy (or the lack of it!). Those issues and challenges are real

and they really do limit life and wellbeing, but we must never allow ourselves at Unlock to forget that the real focus of our work is, not facts and figures but real actual people, with real lives and real stories to share. We love to work with real people and their real stories because that is how we learn best. If you live and work in a community that is, perhaps, oppressed by its own statistics, and that feels left out or left behind, then that's the kind of place where we want to invite you to taste a bit of Unlock's WD40 magic. Please do get in touch!

Because, right at the moment we are actually nowhere!

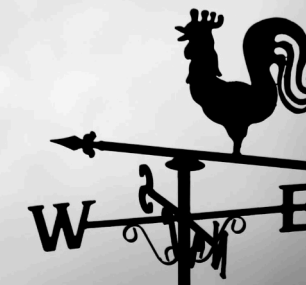
We currently have no locally focussed Unlock work going on. Take up for our Unlock Local Partnership Projects was already diminishing before the pandemic and since then we have not been able to generate any real interest. We have been usefully occupied, while waiting out the post pandemic shakedown, providing training events; or as we like to think if it, on the shore mending our nets.

But now it is time for something new; the world has changed and we are changing with it. For what's new, see Unlock Local Launch on page 2.

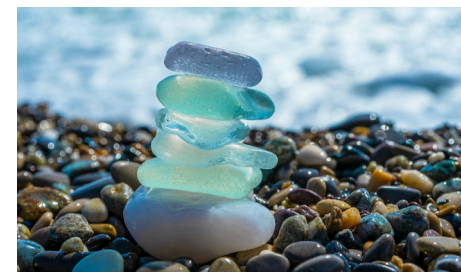
Our local work is our primary focus, we're convinced it is still needed and we'd really like to get it going again, so that we can reach some new places (and maybe go back to some old ones too), so that we can meet new people, and hear new stories that will connect with God's bigger story, so that together we can continue to:

Unlock real life stories of urban people
Reveal Good News of the Down to Earth Christ
Release life changing skills and confidence

Dawn Lonsdale
Chief Officer



SEAHAM GETS CREATIVE WITH SEA GLASS!



Gemma came to an Unlock Training event in Sunderland last Autumn. As part of the day Gemma and her colleagues had fun planning an Unlock session along these lines, and we love it. We're sharing it here to inspire you and show you how Unlock's approach is both simple and creative.

The group started by identifying something that was special to the story of their community. Seaham was home to one of the biggest bottle manufacturers in Europe between 1850 and 1932. At the end of each day the waste glass was simply tipped onto the beach. So, Seaham beach

is famous for the quantities of sea glass that can be found there. The group used the idea of the sea glass to create this Unlock workshop outline.

You are chosen by God, you are loved.

Search out pieces of sea glass from a tray of sand. Find ones that you like and say why they appeal to you. Use this activity to encourage people to share something of themselves and their stories.

Seaham sea glass is something that has been thrown away as rubbish but it is still beautiful and can be used to make beautiful things.

Watch a clip from 'The Chosen' – Jesus choosing his Disciples or Zacchaeus.

Song – God has chosen me?

Continue a discussion of being chosen while making or doing something using sea glass – mobiles, mosaic hearts, light catchers, pictures, decorate jam jars with sea glass.

TRAINING

Unlock provides training in "Working with the bible in a Non-book culture", for those preparing for, or engaged in, urban mission. If you would like to know more about this, please request our training brochure from the National Office.

IF YOU WOULD LIKE SOMEONE FROM UNLOCK TO COME AND TALK AT YOUR CHURCH, OR SPEAK AT A CHURCH EVENT THEN PLEASE CONTACT US AND WE WILL SEE WHAT WE CAN ARRANGE.

LONDON WALK WALKERS STORIES



and Metilda the other young people. Not to be out done, the seniors were led by Maggie Utting.

We all had a fantastic day, visiting 7 churches, seeing the Grenfell Tower and the Memorial

Here we are, the 39! at White City and the start of our 7.5 mile-ish walk around the area. Behind us is the old BBC Television Centre, and in front of us Westfields Shepherds Bush. The weather was kind and there was a lovely cross section of people from ADBC, 39 in all – a record and by far the largest group on the Walk. Sheba (4yrs) walked the whole route without using her pushchair. Jay (7yrs) and friend Srikar (6yrs) walked at the front holding maps making sure we took the correct route and Johanna and Aiden kept going with David

Wall and visited St. Clements and Notting Hill Methodist churches both were involved in supporting people from Grenfell. We passed the Museum of Brands – but no time to explore this and next was Portobello Road and Market and the infamous Notting Hill Bookshop. Walking along the towpath of the Grand Union Canal, we saw the iconic Trellick Tower and passed Wormwood Scrubs Prison.

We were welcomed at the UNLOCK base, St. Kat's church, Westway. Here, we were

asked if they could take a group photo and questioned how we had managed to bring such a large and varied group of people. We now appear on the UNLOCK website and Facebook page. Soon we were back at White City.

It was good to share the day with so many, especially those for whom this was their first time. It's so good to see the different churches, do the quiz and relax together. Also, to see the varied churches and how they are sharing the gospel with their very different communities.

Well, done to all the 39, you were brilliant – Hope to see you next year? Thank you too, for those who prayed for us. I have started to receive donations for UNLOCK, please pass any further donations to me and I will pass them on to support UNLOCK's work with inner city churches.

**DATE FOR THE DIARY:
SATURDAY 12th APRIL 2025,
UNLOCK WALK 42, BATTERSEA.**

Can we improve on 39?!!

Brian Waterfield

2024 walk income has reached £25,000. Brilliant effort! Thank you everyone!



Rob and Kathryn from St Paul's church Hainault, North East London have been doing the London walks for a good number of years now. Rob first did an Unlock (EUTP) walk with his parents when he was a teenager back in the mid-1980s. After his first walk, he then involved the church youth group. He did this walk with a group from Chigwell in Essex churches where he lived at the time. Rob married his wife Kathryn in 1992 and started doing the walks with her and a group from her Church, Hainault Baptist church. They moved 20 years ago to St Paul's, Hainault and have been doing the walks since then with the group from St Paul's church and their

children Luke and Naomi. These photos were taken 21 years apart.

Some of the highlights and motivation for Rob and Kathryn include spending time with each other walking – a chance to forget everything else that's happening and just be with friends.



It is also a good chance to build relationships as church members sometimes bring their spouses and friends to the walk. They get to see parts of London that they might not have seen before. It's always a good day out for church members and they like to directly support a small charity like Unlock.

Rob and Kathryn have just seen the birth of their first grandchild, Heidi, so there may be another generation of Unlock walkers on the way!

**Rob & Kathryn
Whittaker**

**Please contact us: 01709 380318 or office@unlock-urban.org.uk
if you'd like to be added to our mailing list.**

THE 41st UNLOCK LONDON WALK, 27 APRIL 2024

The 41st walk was a walk filled with signs and hope. Despite the fact that the weather was not as great as last year, the turn out was good with a number of about 458 walkers. St Clement's church which was one of the check point churches had a captivating and lovely piece of art – small and large butterflies celebrating the lives of children and adults who died in the Grenfell tragedy. This is a brilliant example of the church being a place of hope for the community.

This year's walk had a group of 39 walkers from Ashurst Drive Baptist Church. That was a great number of walkers from a single church

ranging from different ages and backgrounds. It is important to state that some walkers have taken the baton from their parents and are now a second generation of walkers. Hopefully, they will pass the baton to the next generation.

On a personal note, I want to say it was lovely to meet the Unlock London walkers for the very first time. I enjoyed my conversations with the walkers especially getting to know how long they have been doing the London walks.

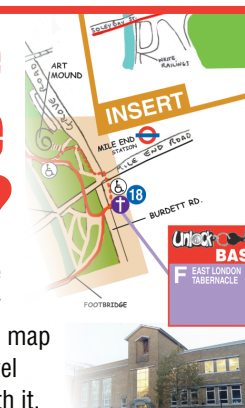
Nguemo Takon
Senior Administrator

UNLOCK LONDON WALK QUIZ WINNER

Congratulations to Stephanie Wilson of Bedford who won the adult quiz prize. Answers are on our website, alternatively, they can also be obtained from the office.

Do you have what we are looking for?

A small team of volunteers plans the Unlock London Walk each year; they recruit the local churches, create the map and photos and collate all of the travel and tourist information that goes with it.



They need some new people to join them to help to make the next Unlock London Walks some of the best yet.

If you live within easy reach of London, care about supporting Unlock's work and have an interest in urban walking - better still if you are already an Unlock Walker and want to help to create the magic that is the Unlock London walk for the future, please contact the Unlock National Office.

Tel: 01709 380318
Email: office@unlock-urban.org.uk
unlock-urban.org.uk

UNLOCK
15 Station Road
Rotherham
S60 1HN

x2 BY 2027

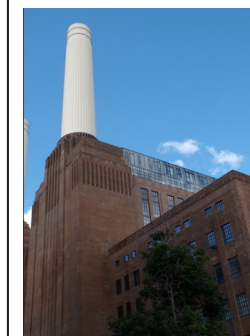
Unlock's target is to double the number of walkers in the next 3 years. This year there were 458.
How many more can you bring along in 2025?

You can collect your walk sponsorship or make a donation online via giveasyoulive.com/charity/unlock

**THE MONEY YOU RAISE BY
WALKING PAYS FOR THE WORK
THAT UNLOCK DOES**

2025 WALK

Battersea and Brixton and in between is where the Unlock Walk will be on **Saturday 12th April.**



The biggest landmark we'll see is Battersea Power station, one of the largest brick buildings in the world, now an upmarket shopping and residential complex having been derelict for decades after closing in 1983. The route will then

loop towards Brixton and Windrush Square, with its celebration and archive of Caribbean people's experiences in the UK.

We'll go via some very well-known places such as the Oval cricket ground and also take you to more surprising places. Transport links include Vauxhall train station, the Victoria and Northern lines and numerous bus routes. Remember you can start at any point and walk the route in either direction.

We will be thinking of power in several ways, as we will see the place which generated a fifth of London's electricity and the embassy of the most powerful nation on earth, not to mention many changes made to London's landscape by the rich and powerful. We will also see evidence of God's very different kind of power working through his love and Holy Spirit in his people in local churches. And reflect on the power of the good news of the down to earth Christ and of his word to change us and others.

Walk Planning Team (WPT)

TREASURER'S REPORT 2024

Hello! I am Chris Mileham a qualified accountant and the new treasurer of Unlock. A big thank you to David Tyers who has been ably keeping an eye on the finances for the last 13 years. My connection with the charity is that I have been a fairly regular participant in the London Walk, beginning with Walk Number 4 in 1987. I think I might even have had a head of hair back then!

On to the numbers. 2023 (our last completed financial period) showed a total deficit of £12,995, compared to a 2022 deficit of £2,480. Whilst this does not look good, it was not as bad as had been

feared. The culprit being total income (£42,842) which was down by 22% on the previous year, that year (2022) having benefitted from the funding appeal, which raised around £20k. So the fact that donations dropped by just over £12k is in fact quite creditable. It was though, disappointing that the income from the London Walk was down by £1k despite the hope that the momentum gained by the return to a physical walk in 2021 would be maintained. It is good to report that income for the Walk for 2024 has now reached £25k.

EXPENDITURE 2023

Governance Costs	£3,662	6%
Fundraising	£4,857	9%
Charitable Activities	£47,318	85%
	£55,837	TOTAL

INCOME 2023

London Walk	£20,092	47%
Donations	£20,131	47%
Investments (interest)	£1,043	2%
Gain in value of investment	£1,576	4%
	£42,842	TOTAL



Total expenditure (£55,837), despite the pressures which we have been all too aware of, has commendably been contained. If we ignore the change in the current value of investments (shown as expenditure in 2022), expenditure is up by 5%, which is less than the level of inflation at the time. It is good to report that there was an increase in the value of the investments held in our legally required designated-reserve fund resulting from changes in the financial markets.

As David reported last year it is hard work seeking to establish new local partnerships. The effects of Covid and the 'Cost of Living Crisis' have hit many very hard, particularly in the communities where we most want to work. We know that our approach, and free on-line resources are being widely used. However, we still need new local partnerships, so that we are able to develop creative relationships which support local partners to grow their Christian ministry, and at the same time produce sufficient income to ensure the work of Unlock can be sustained into the future. In 2024, we are launching a new approach to this which we hope will work better going forward. See details on page 2.

The London Walk continues to be a vital source of income as well as being a great day out. I have now done 30 of them, and despite growing up in London and working there, each one has contained new things to see and look out for. So do join us, if you can, on 12 April 2025 and bring your friends.

Finally a big thank you to all of you who have made and raised donations over the past year and to all who have made a contribution either as volunteers or staff.

Chris Mileham
Treasurer

CHURCH GIVING RANKING

Here is a list of churches who have sent in their sponsorship for the 2024 walk, they have been listed in the order of the amount raised. A massive thank you goes to everyone, whether you were listed here or not, and to the walk leaders who relentlessly work towards recruiting walkers to raise sponsorship. Unlock values every single contribution however small, all combining to maintain and develop our work in deprived urban areas.

— Same position as last year
NE New Entry
▲ Up ▼ Down

1st	East Plumstead Baptist
2nd	St Mary's Church, Hadlow, Kent
3rd	Ashurst Drive Baptist Church, Ilford
▲ 12	St Matthew's Church, High Brooms, Tunbridge Wells
▲ 2	St Luke's, Bricket Wood
▲ 1	Dagnall Street Baptist
▲ 1	Treeton Baptist Church, Rotherham
▼ 1	Marrow Methodist Church, Guildford
▼ 1	Park Street Baptist

▼ 2	St Paul's Church, Marylebone
▼ 3	St Peter's ad Vincula, Wisborough Green
▼ 3	Hutton & Shenfield Union Church
▼ 5	The Avenue Methodist Church, High Wycombe
NE	St Stephen's Church, Tonbridge
NE	St Barbara Deepcut
NE	Christ Church URC, Clacton-on-sea
—	St John's Moulsham, Chelmsford

TRAINING PROVIDED

CO runs Unlock Training:

- Sheffield Diocese
- Durham/Sunderland
- Queens college, Birmingham
- Lichfield Diocese

• Unlock provides training in "working with the bible in Non-book culture", for those preparing for, or engaged in, urban mission. If you would like to know more about this, please request our training brochure from the National office.

• Unlock learning cycle.

• Our friends at Urban Expression have a training programme for ministry at the margins and you'll find the details here cruciblecourse.org.uk

PARTNERSHIP WORK

CO attends:

- Estates Evangelism Task group Conference
- Urban Expression for networking and promotion
- CUF Together network for Promotion and networking
- NECN National Conference

Council Chair attends:

- Eden Network Proximity Conference

PUBLICATIONS

NEWSLETTER PUBLISHED AND DISTRIBUTED AND 2024 LONDON WALK LETTER MAILED

DONATIONS towards the work of Unlock are both needed and extremely welcome. Please contact the office for our bank details if you would like to give regularly by standing order or online banking.

IF YOU WOULD LIKE TO ENCOURAGE YOUR CHURCH TO SUPPORT UNLOCK, EITHER THROUGH THE LONDON WALK, OR AS PART OF THEIR MISSIONARY GIVING, YOU CAN FIND UNLOCK PROMOTIONAL RESOURCES ON THE UNLOCK WEBSITE, NEXT TO THE INFORMATION ABOUT THE NEXT UNLOCK WALK.

giveasyoulive.com/join/unlock

GIVE AS YOU LIVE

Would you like to support Unlock every time you shop online at no cost to you and no cost to us? With Give as You Live, thousands of major brands including Tesco, John Lewis and Expedia have signed up to donate a percentage of every purchase you make online to Unlock. The average shopper will raise £2.10 per month through what they already buy online. Give as You Live is easy to set-up and use. Simply visit **GIVE AS YOU LIVE** at giveasyoulive.com/join/unlock for full details. Try it today and help raise valuable funds for Unlock.

Would you consider leaving a gift to Unlock in your will. This doesn't have to be complicated and it's possible to make many types of different gifts. Full details are available on our website at unlock-urban.org.uk/support_legacyes.php or if you would like to talk with someone about leaving Unlock a donation in your will please contact the Unlock National Office.

LEGACY GIVING

EVENTS

The 41st Unlock London Walk entitled A Walk filled with signs and hope takes place at North Kensington - Kensington, Chelsea, Hammersmith and Fulham. It was a lovely spring day but not as sunny as last year's walk day. There were about 458 walkers. Anne Musson (from St Lawrence Church, Heanor) ran a workshop with engaging activities for walkers.

THE WALK RAISES £25,000 TOWARDS THE WORK OF UNLOCK

Unlock National Gathering held at Cliff College on the theme of 'Abundant Grace'. Unlock Council members get together for a time of inspiration & training, to share local news and developments and for prayer and worship.

THE NEXT LONDON WALK IS ON 12 APRIL 2025

Unlock Office staff retreat takes place at Southwell Minster, Nottinghamshire.

Unlock National Council meet 3 times.

giftaid it
but what is giftaid?

Simply, for those of you who have not yet heard of 'Gift aid', it is a system that enables charities to claim an extra 25p from the Inland Revenue for every £1 donated to them by a UK taxpayer.

9 in every 10 donations received by Unlock are NOT made under giftaid.

If you pay tax then please consider whether you can tick the gift-aid box on the registration form when you make your donation.

Giftaid will NOT cost you anything!

All it means is that we can apply to the Inland Revenue for an extra 25p for every £1 that you give towards our work.

To qualify for Gift aid, you must pay enough tax to cover the amount that will be claimed back by the charity/charities that you give to – so if you give £10 you must have paid £2.50 in tax!

CHAIR'S ANNUAL REPORT

Dear Reader,

The headline is, we're ending 2024 well and we are confident about 2025.

Some will say that the way 'the nation' responded to Covid created great opportunities for new forms of ministry. Maybe so, but for an organisation which is about unlocking people's stories where they live and face the joys and struggles they do.... and seeing what the Jesus story has to say to that, in real time.... For an organisation whose life blood is face-to-face experiencing of each other and of God-at-work among us... it was pretty disastrous. And judging by the degree of difficulty there seems to have been in 'getting going again' over the following couple of years, it's been pretty bad news nearly all round for churches and less well-resourced places.

Unlock has had a very difficult time engaging new places to work. But this year, gradually, requests for Dawn to talk about Unlock to various sorts of gatherings has picked up; there have been a lot more training opportunities; and there are one or two tentative leads for new places to work 'on the ground' and there are a couple of significant partnerships with Dioceses which may be emerging. And we've worked at re-packaging what we can offer these contexts. This might not sound like a lot, but it feels like a better place.

And we have been greatly encouraged by the success of the London Walk in April. Numbers are not back to pre-pandemic levels, but, remarkably, one might say miraculously, income is back up and a bit over. There were many new faces... we have been very white, London is not! So it was great to see people from places we've walked

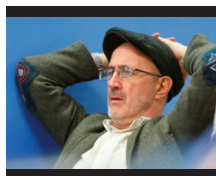
through in recent years. And it felt like there were more young people too. The level of engagement by the churches along the route... the level of interest people take in those places.... it was good to see and feel. If you've never been, go on the website, have a look. It's a really good human and taste-of-heavenly experience.

The better level of income from the walk, some more paring to the bone and limited opportunity to spend on new work means our finances are in about the same place as at the year's start. We've got a new admin person after the wonderful Jenny Blake retired after so many years - that's no mean transition. Dawn created a number of resources during Covid; they and all the rest are on a revamped website that looks more or less the same but works a lot better. There is some great stuff there, free; look again and try something, wherever you are.

You have to ask periodically: has the time past, is the job done (that was an easy no), are there others better placed. We asked ourselves that near the end of 2023. We decided we should continue. As I say, that didn't result in an easy year, but there has been good news and we are more hopeful for 2025. I hope you'll somehow be taken-up with what you read here-in and that therefore you will want to pray with and for us for the success of Unlock's work. And if you already have been - maybe for a long time - thank you so much.

Yours faithfully,

Andrew Dorton



UNLOCK

15 Station Road, Rotherham S60 1HN

01709 380318

office@unlock-urban.org.uk

unlock-urban.org.uk

CHAIR

Andrew Dorton

CHIEF OFFICER

Dawn Lonsdale

SENIOR ADMINISTRATOR

Nguemo Takon

I.T. AND FINANCE ADMINISTRATOR

Kevin Quinton

NATIONAL COUNCIL

Andrew Dorton

Nicholas Carter

Canon Sue Sheriff

Sarah Watkins-Idle

Tim Watkins-Idle

Rev Claire Cullingworth

Fiona Parker

Lisa Shemilt

Chris Mileham

TRUSTEES

Nicholas Carter

Andrew Dorton

Canon Sue Sheriff

BANK

Co-operative Bank, Salford M5 2QP

Unlock, is a charity established to equip Christians in inner city and outer housing estates to be more effective as they share the Gospel of Jesus Christ in their own areas. Unlock employs between four and eight paid staff including a network of workers placed in inner city locations across the UK. The charity is overseen by its National Council which meets three times each year. The legal document of the charity is its trust deed, dated 25th May 1972.

Registered charity no. 313454



find us on Facebook

design by able-design.co.uk

Please cut out and return to us at: Unlock, 15 Station Road, Rotherham S60 1HN

UNLOCK SUPPORTERS REGISTRATION FORM

Name

Address

Tel.

Email

Please add me to the Unlock mailing list

I would prefer to be contacted by:

☐

Email (this saves Unlock money)

☐

Post (we are happy to do this if it is your preferred form of communication)

I enclose a donation to Unlock's work in deprived urban communities in the UK.

£

(Cheques made payable to 'Unlock' please.)

Signature

☐

I would like my donation to be gift aided

Please access information on the Unlock website if you are able to.

If you need printed information please tick the relevant boxes below:

☐

Unlock training

☐

The Unlock London Walk

☐

Praying for Unlock

☐

Unlock resources

☐

Legacy giving

Unlock Data Protection Statement

This information is kept on our Unlock database which is only used by Unlock. It will not be disclosed to any other person or organisation.

By inserting your details above you signify that you have understood this and agree to it. Please see our website unlock-urban.org.uk to read our full Privacy Notice.