

Unlock 2017 UPDATE

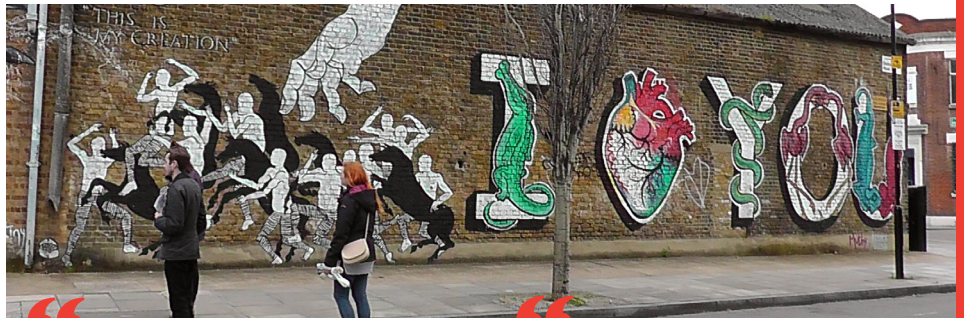
UNLOCKING DISCIPLESHIP

The key to Unlock's approach is the learning cycle that we use in all our work. It is the framework for our workshops, our resources, for conversations and for our local partnership projects.

At the simplest level we use it because, over 44 years, we've found that it works; but we also believe that it reflects the ways in which Jesus taught. Jesus paid attention to the real people hidden behind the public mask; he listened, not just to what people said but to everything about them. He taught using stories that connected to the everyday lives of ordinary people and he challenged people in a way that moved them out of their ruts or at least made them go away thoughtful. Unlock's approach seeks to do the same things and we find that lives and behaviours are transformed. See <http://unlock-urban.org.uk/documents/FW14unlockstorycollectionprintversion.pdf> and also page 4.

As well as our local partnership projects, from time to time we seek to be involved in work at national level which enhances and draws on our local experiences. During 2016 we have taken up opportunities to engage with several initiatives relating to developing discipleship and our contribution has been well received.

Unlock resources are now included in the TROVE website www.discipleshiptrove.com an extensive searchable database of discipleship resources. The staff at TROVE have said:



We love Unlock's resources! They're exceptionally good at engaging with the lives and concerns of ordinary people, and addressing issues that are really important to people's daily lives but too often get ignored by the church. They're always down-to-earth, always engaging, and always manage to balance a real seriousness about discipleship with a sense of fun.



Dr Marika Rose, CODEC's Research Fellow in Digital Discipleship and Curator for the Discipleship Portal Project, TROVE.

We contributed to research into Transformative Theological Education and attended a consultation where one of the organisers said:



"Being faithful disciples of Christ is a challenge to all Christians in all contexts. Unlock, however, is committed to providing resources and training that help people in urban contexts embrace this challenge. This requires helping to find ways to communicate and deepen knowledge of the Gospel through resources better attuned to image and music based culture than book based learning. In urban contexts it also means taking seriously the particular challenges of urban living; how to be good neighbours in diverse cultural and religious contexts; tackling the personal and social impact of crime, debt and deprivation. Unlock has a wealth of experience and record of excellence in supporting individual Christians and churches in this task."



Dr Nick Shepherd, Assistant Director of Discipleship & Ministry, The Diocese of Southwark

We were also part of a research project called, 'What helps Disciples Grow' run by the Saltley Trust.

We know that our approach is not mainstream so it is always encouraging when those involved in more traditional approaches to developing discipleship can see the value of the work that we do.

Dawn Lonsdale (CO)

THE UNLOCK LEARNING CYCLE

UNLOCKING REAL LIFE STORIES OF URBAN PEOPLE

Start with the group telling stories from their real life experience.

LEADING TO MORE EXPERIENCE

What we learn now is learnt for life and changes us. We also learn to keep reflecting!

RELEASING LIFE CHANGING SKILLS AND CONFIDENCE

Change happens as a result of linking real life experience with the Bible. This change often leads to action among others.

REVEALING GOOD NEWS OF THE DOWN TO EARTH CHRIST

The real life stories are connected to and compared with similar situations in the Bible.

SEE OUR WEBSITE FOR MORE INFORMATION AT UNLOCK-URBAN.ORG.UK

BURNLEY: LIFE AFTER UNLOCK

The Burnley Pioneer Project comprises the missional activities of Parkside and Central churches in Burnley Methodist Circuit. Parkside is located in a tough inner urban neighbourhood and Central in the town centre where there is no residential community but shops, offices, clubs etc.



Burnley Pioneer Project partnered Unlock for two years. We employed Alison Adlum, a local circuit member, for 8 hours per week through Unlock to run creative discovery groups in both venues. The two year scheme ended in November 2015. It worked best in Parkside, a neighbourhood environment where local people participated regularly.

Parkside closed in January 2011 and re-opened with a flourish on Palm Sunday. As a result of an appeal for people who wanted to help start a different kind of church, eight people came forward and a core team formed to share vision and plans. On Easter Day the first Messy Church was held. An Easter garden was built on a scrap of ground in front of the church. Passers-by and local children were intrigued and stopped to join in with Amazing Grace, the Lord's Prayer and a cup of tea in the hall. That was the start.

From January 2016 there has been a

new congregation at 1 p.m. each Sunday comprising local people led by members of the Core Team. An ably led Junior Church runs alongside the adult congregation. Numbers are currently around 25 adults and 20 children. A highlight in April 2016 was the baptism of four of the new Christians.

Outreach to families has grown in significance as staff workers have become part of the local community – i.e. resident on the Stoops estate, long term committed. Family nights bring people together and provide positive alternative activities in a safe environment. Group work gives members confidence to articulate their needs and experiences, explore faith and learn new skills.

And so the work started by Unlock and others goes on.

Phil Clarke

FROM TOWN END FARM IN SUNDERLAND, JACQUELINE SENDS US THESE STORIES...

When I started on this Unlock journey 10 months ago I wasn't quite sure which way or where it was heading!

I came to the estate not knowing anyone. Would anyone want to be part of this journey?

The local residents have been amazing, supportive and encouraging. In the beginning they said, 'Well, we'll support you, but we're not religious!' but now they've started asking questions about faith, church, God, and suggesting things we could do together.

We are journeying together - it's a good feeling!

Some of the locals are 'into' spiritualist mediums and have on occasions invited people to come to 'sessions' in each other's homes.

At the Friday Drop-In one of the young Mums mentioned this to me (she had hosted one of the medium sessions). She asked my opinion about it, which led to an interesting conversation. I was about to go into the Chapel to do the reflection and I asked her if she would like to come.

She came along and joined in with all the responses. The reflection was a bouquet of prayer. Each person was

asked to take a flower, think of a person, place or situation that may need prayer, then as you name them, place the flower in the oasis. A beautiful bouquet of prayer was created. The young Mum was so moved by this and said she would never be able to put flowers in a vase again without thinking/praying for someone.

The Easter Ark was really encouraging. We showed a 20 min. film of the Easter story and I did a very simple talk about going from the darkness of Good Friday to the amazing light of Easter day,

The craft we did was:- I gave them a black piece of card (to represent darkness), then if you scraped it with a pencil it had bright colours underneath (representing light). I asked them to think about what they saw and heard on the film and draw something. It was amazing! Some drew a cross, some did hearts and messages of love, some did family names. Another wonderful moment of God at work!

I know the work we do with Unlock can be a little isolated and you can sometimes feel you're 'out there on your own' and I have to say I was feeling a little bit 'am I doing this right?'

One week I received several messages

from local residents checking that I would be at Town End Farm on Wednesday.

I was with the craft & chat ladies having a lovely conversation about babies names and how it's the first gift you give your child, when a couple of the residents came in with a beautiful bouquet of flowers. (I thought it was someone's birthday!)

So what a huge surprise when they gave them to me... 'they are beautiful' I said, 'but what are they for?' 'Read the card', they said...

This is what it said...

"To a special lady who we are glad to have in our lives. This is just to say thank you for being there for us all."

We had a gentle Good Friday meditation in the Chapel that went well. But I was concerned that I was 'leaving them' on Good Friday at the cross, and not taking them to the Resurrection. (We did hand out personal invitations to everyone to join the churches in the North Wearside Parish.) So on Saturday night a handful of us 'flower-bombed' the cross outside St. Bede's so on Easter Sunday morning Town End Farm woke up to a beautiful cross covered in flowers and ribbon and a sign on it saying 'Jesus is Alive'.

GO LANCASHIRE



More than 500 people from across Lancashire flocked to a major new ecumenical resource event at Runshaw College in Leyland in April 2016.

'GO – Equipping the Local Church for Growth' was the first of its kind to be held as a joint enterprise between The Church of England in Lancashire (Blackburn Diocese),

The Methodist Church (Lancashire District) and the North Western Synod of the United Reform Church.

The event was designed to help churches think about outreach and church growth. More than 30 exhibitors gathered in a 'Market Place' setting which proved really popular and successful with stall holders and visitors alike.

Unlock was among the exhibitors which included Churches Together in Lancashire, Christians Against Poverty, Christians in Sport, Fresh Expressions, Messy Church, St Mellitus College, Blackburn Cursillo, The Mothers' Union and many, many more.

All the exhibitors in the Market Place were delighted with the event. There was a fantastic buzz all around the place. It was great to see people from churches all across the County thinking about growth and being resourced for growth.

Many of the visitors to the Unlock stand were interested to hear about the work, particularly in Burnley where 4 people had been baptised the previous weekend (see "Burnley – life after Unlock" article Page 2) – a great story to be able to talk to people about.

One lady said she would take a copy of our newsletter to pray for us, which was a tremendous encouragement and reminded me of how much we value those who support us in prayer. You are playing a valuable part in the work of Unlock and are an essential part of the team, so please use the enclosed prayer guide whenever you can, and remember that more up-to-date prayer requests are available on the prayer page of our website throughout the year.

Jenny Blake

APPLYING THE WD40 OR CHANGING THE LOCKS?

Unlock works primarily through establishing local partnerships in urban areas in the UK. In each location we employ one very part time worker and support their work with a small voluntary local team as well as training, resourcing and management from the Unlock National Office. The Unlock worker's role is to work alongside local church people, in the sort of church fringe context where the church has been engaged in social action but has not really found a way of explicitly sharing the Gospel as part of that. We aim to resource and enable local church people with an approach to Bible engagement which has a proven track record in such communities. Unlock resources are a by-product of that work but our primary

outcome is people who know how to help other people engage with the Bible in a way that changes beliefs, behaviour and ultimately, lives. We are in fact growing disciples who are specifically resourced for the urban context.

We have used our current working model for 12 years now, through economic recession, Council Member and core staff changes and changes in the urban context and in the Church. The Unlock National Council are agreed that it is time to review the way in which we deliver Unlock's way of working. It may be that little needs to change but we won't know unless we are prepared to ask the hard questions.

During the autumn of 2016 some preliminary

research and reflection is taking place, in which many people are being consulted, leading to a report and culminating in 28 hours together at the Unlock Annual Gathering in November 2016.

As well as including all the usual Unlock people, we are inviting some strategic thinkers from our key partnerships to support us in this process. It's important to us that we have input from a wide range of people in such important decisions.

If we knew what would come out of this there'd be no point in doing it so watch this space - and some prayer wouldn't go amiss!

Dawn Lonsdale – Unlock Chief Officer

LONDON WALK

CHURCH WALKING GROUPS

BY JENNY BLAKE

Here is the much-awaited list of church groups which have sent their sponsorship in for the walk this year, in order of amount raised. Do let us know if you recruit a group of people to walk on behalf of your church and you can see your name added to the list next year. It is a lovely way for church members and friends to have an enjoyable day out together as well as raising vital funds for our work. Walkers say that they find it such a unique experience visiting the checkpoint churches and meeting other people walking all with the same purpose. Many positive comments are received at the office, so why not come along to our route through Clapham and Battersea on April 29th 2017 and give it a try. And remember – it is very easy to create your own Virgin Giving page to collect your sponsorship money if you wish. Full details of all you need for next year's walk are due to

be circulated at the end of January 2017, and will also be on the website. You can find the answers to the 2016 walk quiz on the website, and congratulations to first time walkers David & Becky Roberts of Peckham and to Clare Paske of Hook who won the adult and junior prizes respectively.

St Mary's Church, Hadlow, Kent

St Matthew's Church, High Brooms, Tunbridge Wells

St Luke's, Bricket Wood

St Andrew's, Sidcup

Park Street Baptist

Ashurst Drive Baptist Church, Ilford

St Peter's, Wisborough Green

Marrow Methodist Church, Guildford

St Paul's, Hook

Sharnbrook Churches Together

St George's, Stamford

Benefice of Aldermaston & Woolhampton

Holy Trinity, Frogmore

Crofton Park Baptist Church

East Plumstead Baptist

St John's, Moulsham, Chelmsford

Brentwood URC

Oakridge Baptist Church, High Wycombe

West Side Church

The Avenue Methodist Church, High Wycombe

St Mary Magdalen, Sheet

St Andrew's, Chelmsford

High Cross Church, Camberley

Maidstone URC

St Paul's Church, Marylebone

URC Pulborough

Guildford Methodist Church

St Andrew's Church, Hatfield Peverel

Welling Methodist Church

South Norwood URC

Romford Baptist Church

St James, Clapton

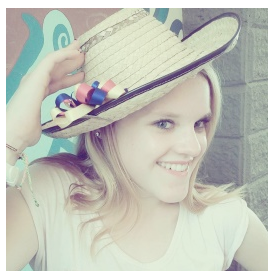
Rayners Lane Baptist Church

St Mary of Bethany & New Life Churches, Woking

UNLOCK LOCAL STORIES

Readers will be aware that we work mostly with people right on the fringes of the church who are barely beginning to explore the Christian faith, so while in your own context it might not seem that big a deal that someone expresses any faith or asks for prayer, in the places where we work it really does represent people taking a big new step towards faith in God. What we discover, over and over again, is that we have much to learn about openness of heart and generosity of spirit, about caring for one another and about sheer grace - from the people we might be tempted to think we are there to help!

Bethany has been working with a 'Friendship Group' mostly over 50s, who have been reminiscing about their memories of the local fishing industry. Bethany has been helping them to connect their own stories with the stories about fishing in the Bible.



**BETHANY
IN HULL**

Siggy has been working with the folk who attend some local church coffee mornings and lunches exploring the themes of hospitality & welcoming the stranger. If these topics are topical where you are you might want to have a look at our Hospitality resource <http://unlock-urban.org.uk/documents/unhingeinghospitality.pdf> and hopefully before long there will be more resources on this topic.



**SIGGY
IN SHEFFIELD**

THE 34TH **UNLOCK** LONDON WALK, 29 APRIL 2017

The 2017 London Walk on 29th April will not be starting at Llanfihangel-y-pennant, although it might be argued that's where the story started, nor will it be 26 miles long and we don't expect anyone to do it barefoot!

We shall in fact be walking in Battersea and Clapham, and part of the walk takes us across Clapham Common. We shall see both signs of prosperity and indications of poverty. Checkpoint churches will include two flourishing Anglican churches with rather different ministries and at least one small mission church, each one seeking to serve the needs of differing communities in the area. There's older social housing contrasting with newer high rise developments. There are two

interesting old town centres in Clapham and Battersea to enjoy, and the possibility of a stretch along the Thames. The many railway tracks in the area pass through the throat of Clapham Junction which, with more than 2000 trains a day, is Britain's busiest train station.

So what is the Welsh connection?

Mary Jones (16 December 1784 – 28 December 1864) was a Welsh girl who lived at Llanfihangel-y-pennant, Abergynolwyn, at the foot of Cader Idris near Dolgellau. At the age of fifteen, Mary walked twenty-six miles barefoot across the countryside to buy a copy of the Welsh Bible from Thomas Charles in Bala because she did not have one.

The story of Mary Jones and her Bible

inspired the founding of the British and Foreign Bible Society and Unlock's partnership with the Bible Society has been crucial to our work and development in recent years.

The Clapham Sect, or 'Clapham Saints' - including Thomas, Charles and William Wilberforce - were a group of Church of England social reformers based in Clapham, London at the beginning of the 19th century (active c. 1790–1830). They are credited with the founding of, amongst other organisations, The British and Foreign Bible Society.

The plan is that, as well as one of the churches on the walk route showcasing Unlock's work as usual, another will showcase the work of our valuable partners, the Bible Society.

BALA, BATTERSEA & CLAPHAM



If you know of any other people who would like to be put on the walk mailing list please let Unlock office know, having first obtained their permission.

CHECKPOINT VOLUNTEERS

If you would like to support Unlock through the London walk, but are finding the walking a bit much these days, why not volunteer to represent Unlock at one of the churches on the walk route. Unlock checkpoint volunteers help everything to run smoothly. They are provided with clear instructions and an Unlock staff T-shirt, so that they can be easily identified. If you are interested in helping this way please contact the Unlock Office.

You can now collect your walk sponsorship or make a donation online via **uk. virgin money giving .com** Virgin Giving.

We are extremely grateful to an anonymous donor who has made a substantial contribution towards our funding gap for 2016. A donation of £8,000 funds an entire local project for 2 years, whilst £2,000 funds Unlock's contribution for a year. Any donation, however small, is extremely welcome.

UNLOCK GOODIES

UNLOCK T-SHIRTS AND BASEBALL CAPS IN ASSORTED SIZES AND COLOURS AVAILABLE FROM THE UNLOCK OFFICE FOR £6 PLUS P&P

We now have stylus pens in purple or silver & black which will be on sale at the walk or available from the office at £1.50 each plus P&P.



IF YOU WOULD LIKE SOMEONE FROM UNLOCK TO COME AND TALK AT YOUR CHURCH, OR SPEAK AT A CHURCH EVENT THEN PLEASE CONTACT US AND WE WILL SEE WHAT WE CAN ARRANGE.

FINANCE

TREASURER'S REPORT 2016

I am very pleased to report that Unlock ended the year with a significant surplus of £12,501. In 2015, our last completed financial year, we received income of £70,781 but managed to hold our outgoings at a similar level to the previous year at £58,280 (Expenditure £57,841 and losses on investments £439).

My report last year mentioned concerns that the increased donations of 2014 may not be sustainable. 2015 saw donations increase from the previous year by £2,738 although income

from the London walk was over £3,177 less than in 2014 at £26,596. Once again, we had a significant one-off donation via our Virgin Money Giving account. The Bible Society has continued to support the core work of Unlock and has also provided funding for a local project in Hull. We are very grateful for this ongoing support.

Unlock continues to develop new local partnership projects and, as always, seeks to put resources to effective use as quickly as

possible. Hopefully, another new local project will have started by the time this newsletter is printed and there are discussions about other potential new local projects in the pipeline. Our latest budget for 2016 predicts a small deficit if we are able to start some of these projects before the end of 2016. We hope that you will continue to support our efforts to keep the work of Unlock sustainable in the longer term.

The London walk remains a significant part of our income, although income from this in 2015 was down on 2014, and it's too early to be sure yet, but it looks as if this may have fallen again in 2016. The walk is a great day out and an excellent way to promote the work of Unlock. Thank you to everyone who supports the walk: walkers, sponsors, host churches and the Walk Planning Team. We would love to see you at the next walk in 2017. Why not invite a group of new walkers to join you?

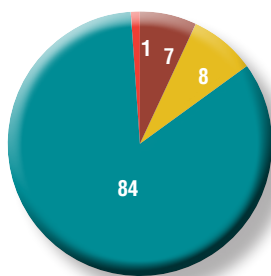
Thank you, on behalf of council, to everyone who supports Unlock in whatever way. We rely on our supporters to spread the word about Unlock to friends and their church communities. We are always happy to hear from churches reviewing charitable giving who may be interested in supporting Unlock. Let the office know if you have any queries or need any information or material.

My personal thanks to the Unlock office staff (Jenny and Kevin) for all their hard work, support and willingness to go the extra mile for Unlock.

David Tyers (Treasurer)

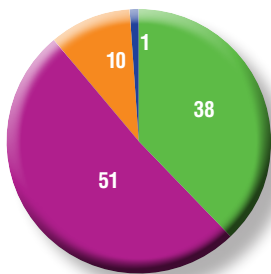
EXPENDITURE 2015

Governance Costs	£3,831	7%
Fundraising	£4,908	8%
Charitable Activities	£49,102	84%
Loss in value of Investments	£439	1%
	£58,280	TOTAL



INCOME 2015

Sponsored Walk	£26,596	38%
Donations	£36,335	51%
Grants	£7,000	10%
Investments (interest)	£850	1%
	£70,781	TOTAL



GIVE AS YOU LIVE

giveasyoulive.com/join/unlock

Would you like to support Unlock every time you shop online at no cost to you and no cost to us? With Give as You Live, thousands of major brands including Amazon, Tesco, John Lewis and Expedia have signed up to donate a percentage of every purchase you make online to Unlock. The average shopper will raise £2.10 per month through what they already buy online. Give as You Live is easy to set-up and use. Simply visit **GIVE AS YOU LIVE** at www.giveasyoulive.com/join/unlock for full details. Try it today and help raise valuable funds for Unlock.

giftaid it but what is giftaid?

Simply, for those of you who have not yet heard of 'Gift aid', it is a system that enables charities to claim an extra 25p from the Inland Revenue for every £1 donated to them by a UK taxpayer.

9 in every 10 donations received by Unlock are NOT made under giftaid.

If you pay tax then please consider whether you can tick the gift-aid box on the registration form when you make your donation.

Giftaid will not cost YOU anything!

All it means is that we can apply to the Inland Revenue for an extra 25p for every £1 that you give towards our work.

To qualify for Gift aid, you must pay enough tax to cover the amount that will be claimed back by the charity/charities that you give to – so if you give £10 you must have paid £2.50 in tax!

TRAINING

Unlock provides training in “Working with the Bible in Non-book Culture”, for those preparing for, or engaged in, urban mission. If you would like to know more about this, please request our training brochure from the National Office.

LEGACY GIVING

Would you consider leaving a gift to Unlock in your will. This doesn't have to be complicated and it's possible to make many types of different gifts. Full details are available on our website at www.unlock-urban.org.uk/support_legacies.php or if you would like to talk with someone about leaving Unlock a donation in your will please contact the Unlock National Office.

IF YOU WOULD LIKE TO ENCOURAGE YOUR CHURCH TO SUPPORT UNLOCK, EITHER THROUGH THE LONDON WALK, OR AS PART OF THEIR MISSIONARY GIVING, YOU CAN FIND UNLOCK PROMOTIONAL RESOURCES ON THE UNLOCK WEBSITE, NEXT TO THE INFORMATION ABOUT THE NEXT UNLOCK WALK.

2016 walk income has reached £24,000.
Great effort!
Thank you everyone!

ACHIEVEMENTS

LOCAL PARTNERSHIP PROJECTS

Town End Farm, Sunderland – Jacqueline Atkinson continues her work.

Birmingham – 3 Queen's students work voluntarily alongside their college training.

Hull – Bethany Gray continues her work based in the area around Hull Community Church.

Woodhouse, Sheffield – Interviews take place and Siggy Parratt-Halbert is appointed.

Hastings – CO pays a visit to discuss possible local project, funding is secured and the appointment process begins.

Newcastle – CO pays a visit to discuss possible further project.

CO meets with each worker to review progress.

TRAINING PROVIDED

CO runs workshops

- Queen's College, Birmingham

PARTNERSHIP WORK

CO attends

- Saltley Trust event in Birmingham entitled “What helps disciples grow”.
- Conference for transformative theological education in Stratford.

Jenny Blake (Office Administrator) & Maureen Hudson (former worker) attend Lancashire GO event.

Unlock resources included on TROVE website of Discipleship resources.

PUBLICATIONS

Newsletter published and distributed and 2016 London Walk brochure mailed.

Article included in National Estate Churches Network Autumn 2016 newsletter.

EVENTS

The 33rd Unlock London Walk entitled Around the Orbit revisits the Olympic Park area. A fine day for the 725 walkers who appreciate seeing the changes in the area in the past 6 years. Jacqueline Atkinson

(Sunderland worker) & Bethany Gray (Hull worker) run an activity on the theme of “Running the Christian Race”. Walkers are invited to reflect on a series of posters containing bible passages, questions and prayers and then take a medal to hang on a wooden cross.

The walk raises £24,410.24 towards the work of Unlock.

The next London walk will be on 29th April 2017.

Unlock National Council meet twice.

Unlock National Gathering held at BMS International Mission Centre, Birmingham on the theme of “Your Heart will be Where Your Treasure is” with Bill Bullin from Hastings facilitating our activities. Over a period of 24 hours staff, workers and Council together with friends and Local team representatives get together for inspiration and training, to share local news and developments and for prayer and worship.

Unlock Office Staff retreat takes place at Whirlow Spirituality Centre with the Chaplain Rev Joy Adams leading our thinking.

CHAIR'S ANNUAL REPORT

2016 feels like it has been a good year! By the grace of God, in spite of no big financial backers, but because of

- the generosity of certain individuals,
- the continuing success of our own form of crowd funding - the London Walk,
- our partnership with the Bible Society,
- the success of local fundraising leading to more local workers - the point of the exercise!
- and not least the dedication and prayerful application of those local workers and the curial small central team that supports them...

... 2016 has been remarkably free of worry about the future and very focussed on developing existing and new work in places where, although God may not be absent, it can feel like his people pretty much are. Actually though, we wouldn't be developing work in these places if some people didn't really get it. Such people know that we all need to learn how to really communicate - not just listen to someone's story so as to earn a right to say, 'here's the answer' in words and abstract ideas that probably don't land in the heart or the guts. Rather, as we've said countless times in different ways - to create spaces, situations, conversations where people discover that Jesus didn't come to live alongside better righteous people - people who aren't like struggling but often scummy me - but he came to live with and share a life with people exactly like struggling but often scummy me. He was good news (except to hypocrites and people with a lot to lose). And so, my life, my story, the things that I've seen and experienced and said and done... this is the stuff that Jesus speaks to and can be good news to. Our job is to make those spaces, to let a person or group speak, and to let Jesus speak back. (We have

some great resources to help people - you - get started; do have a look at the website <http://www.unlock-urban.org.uk/resources.php> if you haven't already).

This Update should also say something about what may be ahead in 2017 on the basis of a very good 2016 that you will read much more about herein. Well, it's 12 years since we threw the whole Unlock endeavour into developing teams supporting 'local workers'. We need to ask God, ourselves and everyone associated what they think about the way we've been working. Given that we feel like we are in quite a stable place, it seemed right to ask ourselves now, rather than wait for another crisis. So, between September and our annual 'Gathering' in November 2016 we are doing a 'strategic review'! At the Gathering we'll be considering the results of our 'Applying the WD40 or changing the locks?' set of questions to all those directly involved in our local work. We'll have with us various partners, people who can give strong external challenge to us. Whether this means things will change a great deal, we really don't know. Please pray for us as we work on this.

The last 'Unlock Update' had a front cover story from Burnley. Soon after it was published we heard that three of those people shown in the picture had been baptised. If you've still got the 2016 Update you might want to read it again. What we do does make it possible for people to hear, understand and embrace the good news of the down to earth Christ. We want to do more of that, and as effectively as we can. And we continue to need and appreciate your support in all this, thank you!

Andrew Dorton



UNLOCK, Handsworth Parish Centre
Handsworth Road, Sheffield S13 9BZ

Tel: 0114 2939060

Email: office@unlock-urban.org.uk
unlock-urban.org.uk

CHAIR

Andrew Dorton

CHIEF OFFICER

Dawn Lonsdale

SENIOR ADMINISTRATOR

Jenny Blake

I.T. AND FINANCE ADMINISTRATOR

Kevin Quinton

NATIONAL COUNCIL

Andrew Dorton (Chair), David Tyers (Treasurer)
Nicholas Carter (Secretary), Barbara Funnell
Deacon Debbie Marsh (to June 2016), Canon
Sue Sheriff, Sarah Watkins-Idle, Tim Watkins-Idle, Rev Claire Cullingworth

TRUSTEES

Nicholas Carter (Chair), Barbara Funnell
Andrew Dorton

BANKERS

Co-operative Bank, Salford M5 2QP

Unlock, is a charity established to equip Christians in inner city and outer housing estates to be more effective as they share the Gospel of Jesus Christ in their own areas. Unlock employs between four and eight paid staff including a network of workers placed in inner city locations across the UK. The charity is overseen by its National Council which meets three times each year. The legal document of the charity is its trust deed, dated 25th May 1972.

Registered charity no. 313454



Find us on
Facebook

Please cut out and return to us at: Unlock, Handsworth Parish Centre, Handsworth Road, Sheffield S13 9BZ

Unlock Supporters Registration Form

Name

Address

Tel No.

E-mail

Please add me to the Unlock mailing list:

I would prefer to be contacted by:

☐

E-mail (this saves Unlock money)

☐

Post (we are happy to do this if it is your preferred form of communication)

I enclose a donation to Unlock's work in deprived urban communities in the UK.

£

(Cheques made payable to 'Unlock' please.)

Signature

☐

I would like my donation to be gift aided

Please access information on the Unlock website if you are able to.

If you need printed information please tick the relevant boxes below:

☐

Unlock training

☐

Unlock resources

☐

The Unlock London Walk

☐

Legacy giving

☐

Praying for Unlock